

## CHAPTER I – THE DISCOVERY, BY ASTURIAN FÉLIX LUQUE, OPENS NEXT FRIDAY AT LABoral

The art work questions the spectator's perception of the veracity of that which it shows, tracing a path through videos leading to an encounter with an interactive physical object.

This Friday, June 26th, LABoral opens the exhibition *Chapter I – The Discovery*, a project by Asturian artist Félix Luque, a new production by the Projects Office of El Centro de Arte y Creación Industrial, that will be open until September 7th. It is an installation in which the visitor discovers an object of science fiction that emits a code of light and sound.

In *Chapter I – The Discovery*, Félix Luque presents "a history of science fiction", an immersive experience for the spectator, guiding his or her reading of the key concepts that inspired the installation and its sophisticated technological equipment. Through an unidentified object - a dodecahedron - and a world related to the future, Luque offers us a personal, mystic and poetic vision. The artist assures us that "science fiction constitutes the ideal framework for artistic expression with new technologies, given that it rightfully questions the role of science and technology and the definition of the human." From this perspective, science fiction provides a theoretical framework for this Asturian artist, with renowned and extensive professional experience despite his young age, allowing him to explore the nature of digital art itself.

The artist questions the viewer's perception about the truthfulness of what is shown, outlining a journey from the initial viewing of a series of videos of synthetic images and ending up in an encounter with a physical interactive object which co-opts information flows, sound and light transmission. Within the context of the work, rather than answering essential philosophical questions -such as, how can technological advances be controlled? On what ethical bases can its purposes be chosen? Who is entitled to decide on the ultimate mission of machines? Can machines destroy us?- this installation, on the contrary, is about reformulating those modern philosophical questions through the use of images associated with the popular culture of science fiction. Félix Luque's work renews an age-old cultural ground base, questioning the limits of our notions of artificial intelligence.

**Félix Luque Sánchez** (Oviedo, 1976) is a digital artist and has created and presented works and installations at various contemporary art institutions in Spain, including Mercat de les Flors, Metrònom, CCCB and MACBA. He has also received a number of scholarships, including a Phonos grant for audiovisual and musical production for young artists (2002-2004), and the Digital Art scholarship of the Belgian Ministry for Culture for the Francophone community (2008). From 2001 to 2007, he was a faculty member at IUA, the Audiovisual Institute at the Pompeu Fabra University (UPF) in Barcelona, carrying out didactic and technical functions at the

university's Digital Arts Master and Postgraduate Programme of Musical Composition with New Technologies. He is also engaged with sound design and the development of customised technologies, hardware and software for artists, museums and private enterprises. He currently lives in Brussels. (<http://www.othersounds.net/>)

## EXHIBITION

DATES: 26.06 – 07.09.2009

OPENING HOURS: Wednesday to Monday, 12:00 to 8:00 PM.

PRODUCTION: Project Office and the Communauté française de Belgique (<http://www.arts-numeriques.culture.be/>)

IN COLLABORATION WITH: iMAL (<http://www.imal.org/>)

VENUE: Platform 1 of LABoral

SOFTWARE-HARDWARE DEVELOPMENT: Félix Luque Sánchez

DESIGN OF DODECAHEDRON: Damien Gernay a.k.a DustDelux (<http://www.dustdeluxe.com>)

3D VIDEOS: Iñigo Bilbao (<http://www.ibl3d.com>)

VIDEO CAMARA: Nicolás Torres

LIGHTING CONSULTANT: Pablo Martínez Díez (<http://www.pablomartinezdiez.net>)

## ACTIVITY PROGRAMME

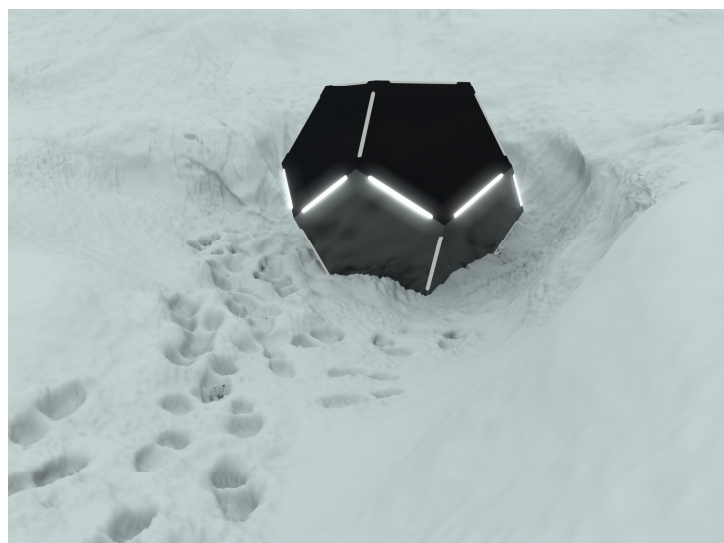
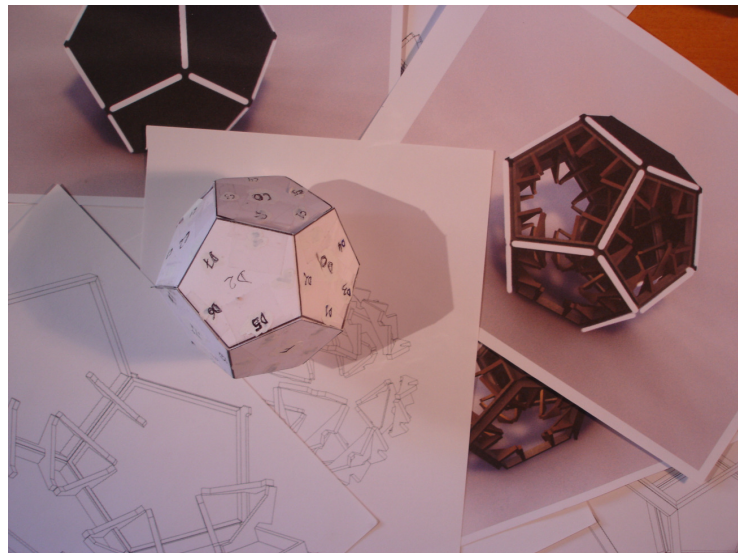
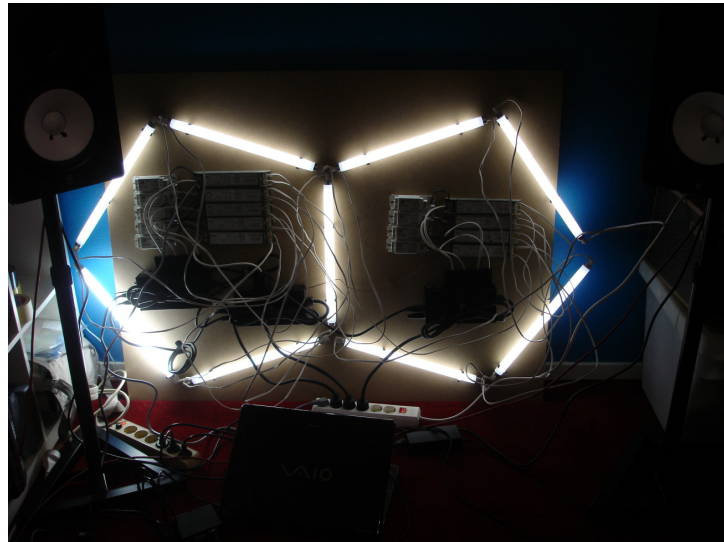
**26.06.2009**

### ***DIÁLOGOS [DIALOGUES]***

With the DIÁLOGOS Programme, LABoral attempts to approach the art object to Asturian society through the first-hand intervention of its authors: the artists and the curators that take part in the exhibitions. Félix Luque will answer questions from the audience on the process involved in the creation of their works. Afterwards, it will proceed with the exhibition opening.

TIME: 8:00 PM

VENUE: LABoral Centro de Arte y Creación Industrial



**Chapter I – The Discovery** (2009). Félix Luque. Images of the production process and installation.